



**2007 Nissan Versa**



Drive big. Park small. Ride an effortless wave of power while getting up to 36 mpg<sup>1</sup>. Stretch your legs without stretching your budget. Leave your expectations at the curb and drive away with your Intelligent Key still in your pocket. Where to? You make the call. With the Bluetooth<sup>®</sup> Hands-free Phone System, we'll even dial for you. Or just plug right in and let your podcast bring you the world. The brand-new Nissan Versa. The next generation small car.

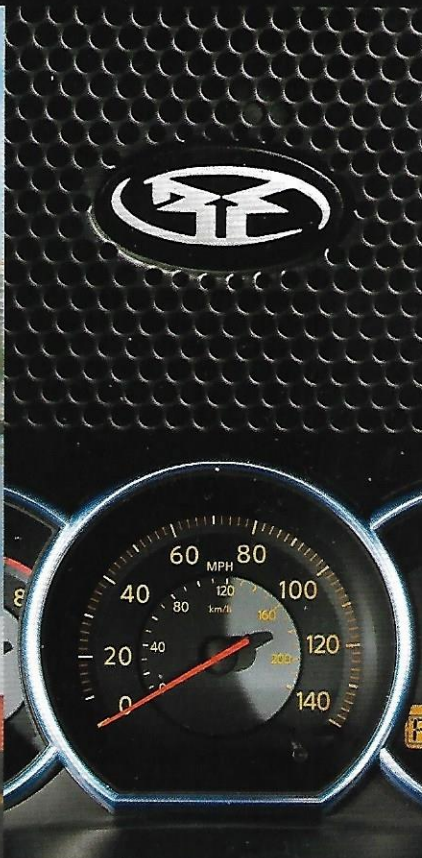


**SHIFT** freedom

<sup>1</sup>2007 EPA fuel economy estimates of 30 city/36 highway for Versa equipped with Xtronic CVT. Actual mileage may vary with driving conditions – use for comparison only. <sup>2</sup>The Bluetooth<sup>®</sup> logo and logos are owned by Bluetooth SIG, Inc., and any use of such marks by Nissan is under license.



- 9 Interior Comfort
- 12 Intelligent Key
- 14 Entertainment
- 16 Hands-free Calling
- 18 Performance
- 20 CVT Transmission
- 24 Safety
- 28 Models/Specifications
- 32 Paint+Fabric
- 34 Accessories







**Versa 1.8 SL Hatchback** shown in Magnetic Gray.





**Versa 1.8 SL Hatchback** shown in Charcoal Cloth with optional equipment.





5 passengers  
Plus room for all their gear.

3 passengers  
Open mike night.

2 passengers  
50.4 cu. ft. of maximum cargo room.  
Drummer wanted.

Interior U

You see the largest interior in its class<sup>1</sup> and everything you can put in it. We see the result of inspired engineering. By locating the engine far forward and extending the Versa's wheelbase, there's stretch-out leg room for five. By pushing the wheels to the far corners, the suspension moves out and away from the cabin, creating room a linebacker could love. It even left plenty of space to add in a few things, like a number of clever places to stash your stuff. The Versa interior is impressive, no matter how you look at it.

“...the Versa won our back seat test, with perfect scores for two or three riders.”

Car and Driver Comparison  
May

<sup>1</sup>Ward's Automotive Group's Lower Small Car segment, January 2006. Cargo shown for display purposes only. Nissan recommends that all loose items be secured when transported.

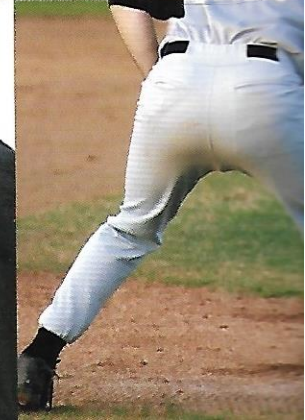
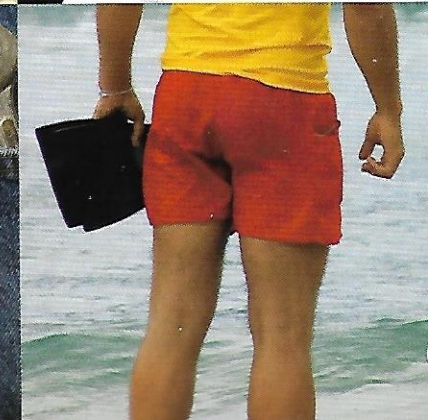
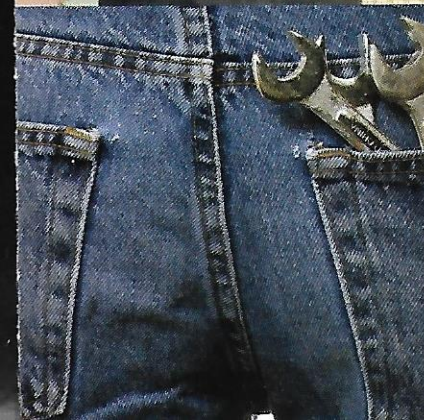
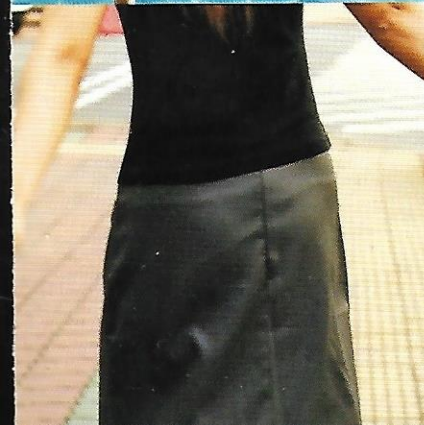
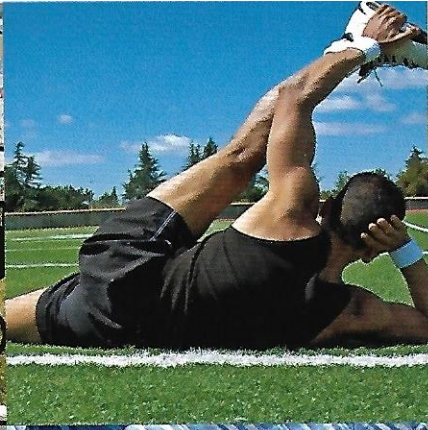
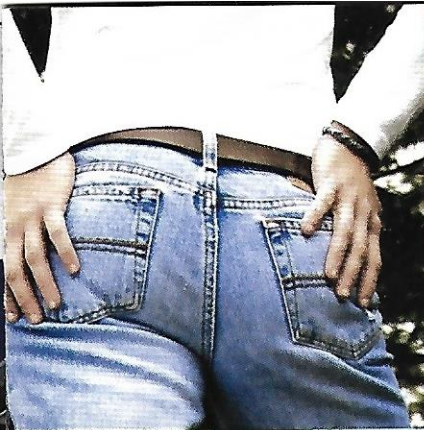
Convenience store


Entertainment Center

Boxing glove-size glove box

Location, location, location





A close-up photograph of a car seat's interior. The seat is upholstered in a light-colored fabric with a fine, grid-like perforated texture. The lighting is dramatic, highlighting the contours and the texture of the fabric. The seat appears to be part of a larger, ergonomically designed interior.

**It's not just fingerprints that are unique. So it makes sense that if you want to be really comfortable, you need a seat that appreciates your individual shape. That's why Versa features king-size front seats with the support of ergonomically sculpted panels and the plushness of double-thickness foam on the lower seat cushions. Whether it's your daily commute or a cross-country trek – Versa's got you covered.**

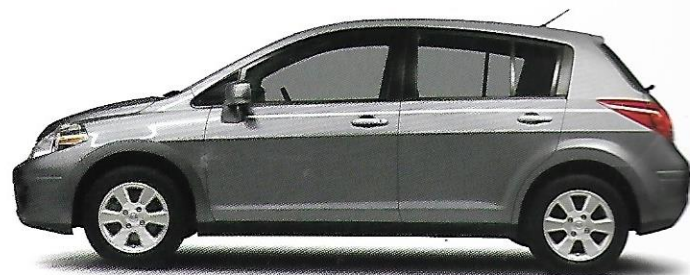
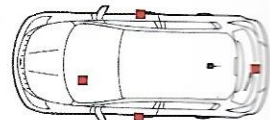




Versa 1.8 SL Hatchback shown in Beige Cloth with optional equipment.

## Intelligent Key

**You're good to go.** With available Intelligent Key in your pocket or purse, just walk up to your Versa, and get instant recognition. Press the button on the door or hatch and it instantly unlocks for easy access inside, turn on the ignition without even using a key and go. And with Intelligent Key constantly scanning the signal, Versa is one place you won't have to worry about identity theft.



**It could only be you.** Your barista, your dry cleaner, the teller at the bank. Isn't it nice that with the sea of faces passing by the every day, they still recognize you immediately? With available Intelligent Key, so can your Versa. Say goodbye to ever fumbling for a key or remote again. And hello to personal service in an unexpected new way.

If there's one thing I love, it's my \_\_\_\_\_  
MUSIC  
SPORTS  
SINGING VOICE  
24-HOUR TRAFFIC REPORTS  
NAME OF SOMETHING

With the available auxiliary input,<sup>1</sup> I can indulge myself with a

\_\_\_\_\_ and listen to \_\_\_\_\_,  
MP3 PLAYER  
PORTABLE GAME  
KARAOKE MICROPHONE  
NAME OF SOMETHING  
UP TO 1,000 SONGS  
MY FAVORITE PODCASTS  
THE PLEAS OF MY PASSENGERS  
NAME OF SOMETHING

all in the comfort of my oversize driver's seat. Satellite radio<sup>2</sup> lets

me enjoy \_\_\_\_\_, which really is pretty handy.  
UP TO 100 COMMERCIAL-FREE CHANNELS  
INTERNATIONAL NEWS  
MY FAVORITE TEAMS  
SOMETHING DIFFERENT EVERY TIME  
NAME OF SOMETHING

especially when you consider \_\_\_\_\_  
EVERYTHING THAT'S GOING ON IN THE WORLD  
I LOVE CHICAGO BLUES  
I STOOD IN LINE 3 DAYS FOR  
PLAYOFF TICKETS  
NAME OF SOMETHING

<sup>1</sup>Driving is serious business and requires your full attention. Do not operate any devices connected to the auxiliary input while driving. <sup>2</sup>Available on 1.8 SL with Convenience Package. No satellite radio reception is available unless optional satellite receiver and antenna were purchased and installed and an XM® or Sirius™ satellite radio service subscription is active. Satellite radio option can only be installed in vehicles that were factory pre-wired for satellite radio. Satellite radio not available in Hawaii and Alaska.

LOAD

PRESET A·B·C

CD

RADIO

COMPACT  
disc  
DIGITAL AUDIO

CORDS

DISP

1 2 3 4 5 6

CLOCK

CY09C

6CD CHANGER MP3

SEEK  
TRACK  
FILE

SCRL

1

4

RPT  
RDM

AUDIO

2

5

AUX

TUNE  
FF·REW  
FOLDER

SCAN

3

PUSH  
PWR

6

VOL

CAT

CH

MAX  
A/C

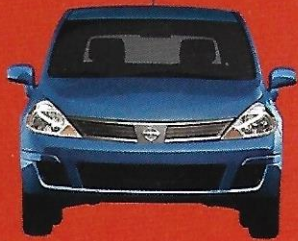
**The audio system of choice.** With an available premium audio system featuring 6 strategically placed speakers and a Rockford Fosgate-powered subwoofer, you can fill Versa's impressively large cabin with equally impressive sound. And with an in-dash MP3-

capable 6-CD changer (good for 4.2 GB of music – about 1,000 nonstop songs), an auxiliary audio input jack for your MP3 player, and separately available satellite radio,<sup>2</sup> a world of entertainment that's uniquely your own is now easily within your reach.



Call Deb . Leave yourself

Press to talk



Versa

+ your  means every

Cell phone

With  Bluetooth<sup>® 1</sup> your world is

Even if your  is way in the

Darn cell phone

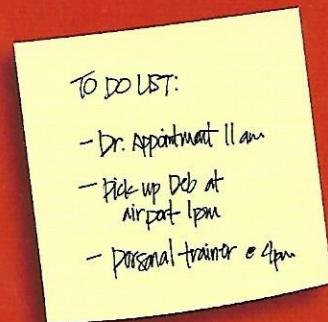
No problem – you make the

**Technology is your friend.** With your Bluetooth<sup>®</sup>-enabled cell phone<sup>2</sup> in the Versa – just about anywhere in the Versa – it can make the connection. You can receive calls, dial from the system's on-board memory, or call out the digits. You can even record voice messages for playback later. For privacy, a simple command lets you switch to your handheld

or back. It even mutes your music while you're on the phone, and returns you to your program when you're done. And since it can be programmed in English, French, or Spanish, adding some international flair *no es problema?*

Hands-free Calling

a quick voice memo

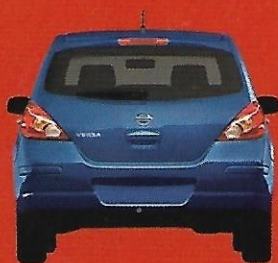


Notepad

one on board can talk to Ed.

just a push of a button away.

back inside your !



Cavernous cargo area



Gym bag

call. We'll dial it for you.



**It sounds like something you'd expect in a sports car:** A 6-speed manual transmission. But even if you don't own a pair of driving gloves, you can appreciate that a greater number of gears allows a snappier first gear for quick off-the-line acceleration, and a smaller rpm drop with each upshift for seamless mid-range response. And with a long-legged top gear for quiet, economical cruising, you'll be enthusiastic in

any driving situation. Smooth out your drive with the available 4-speed automatic transmission. It's electronically controlled for velvety shifting and quick response, while the overdrive 4th gear and lockup torque converter allow lower engine rpm at highway speeds, for a quiet and fuel-efficient ride! To find out about Nissan's truly revolutionary available Xtronic CVT transmission, turn the page.

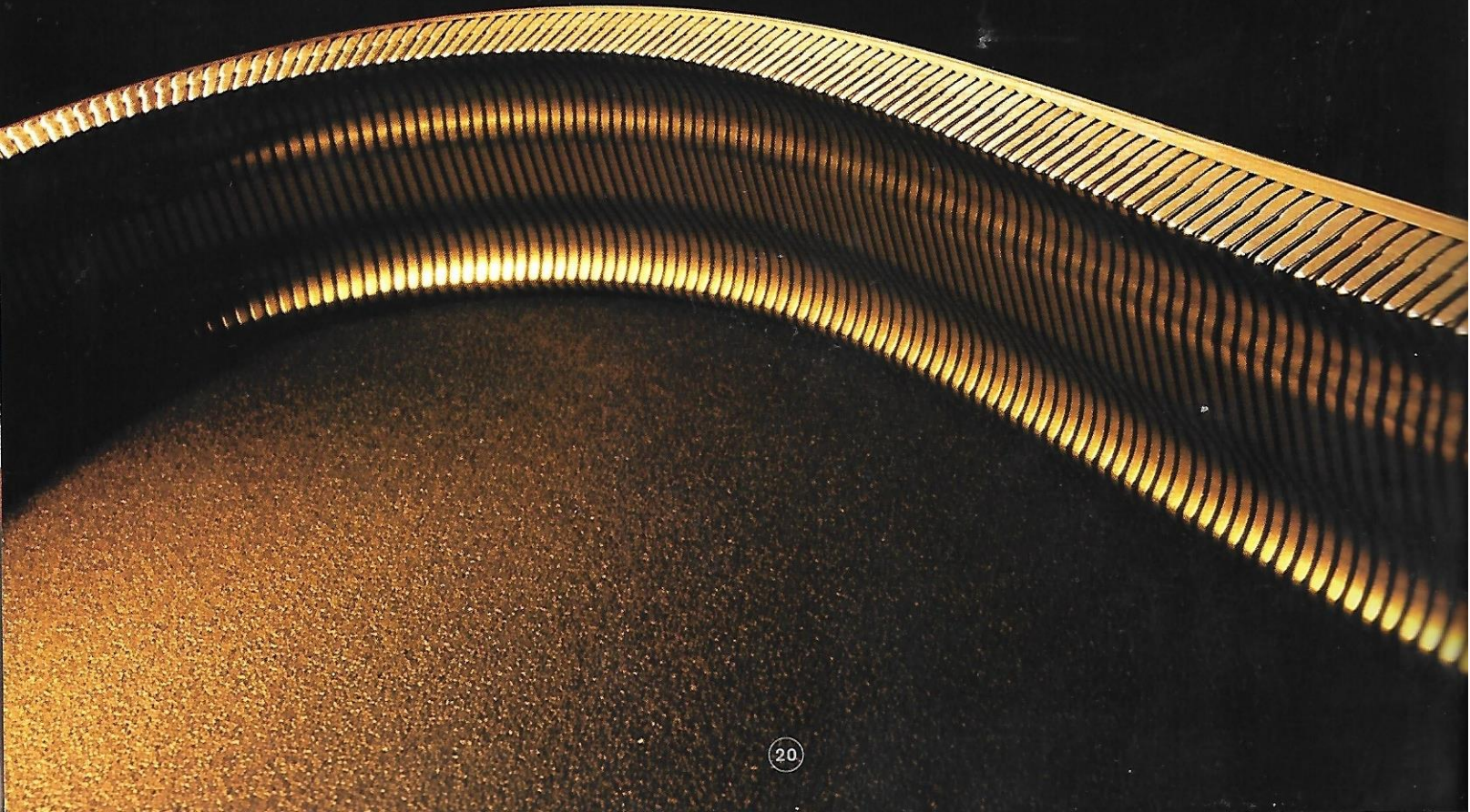
**It's got your winning numbers.** Be a high roller. Go up to 420 miles between fill-ups. Stay in the green with up to 36 mpg.<sup>1</sup> Play for keeps with 100,000 miles before needing a tuneup.<sup>2</sup> And when it's time to pass those lumbering 18-wheelers, you'll find Versa's best-in-class<sup>3</sup> horsepower (122) and torque (127) deliver exhilarating performance along with inspiring fuel economy. It's your lucky day

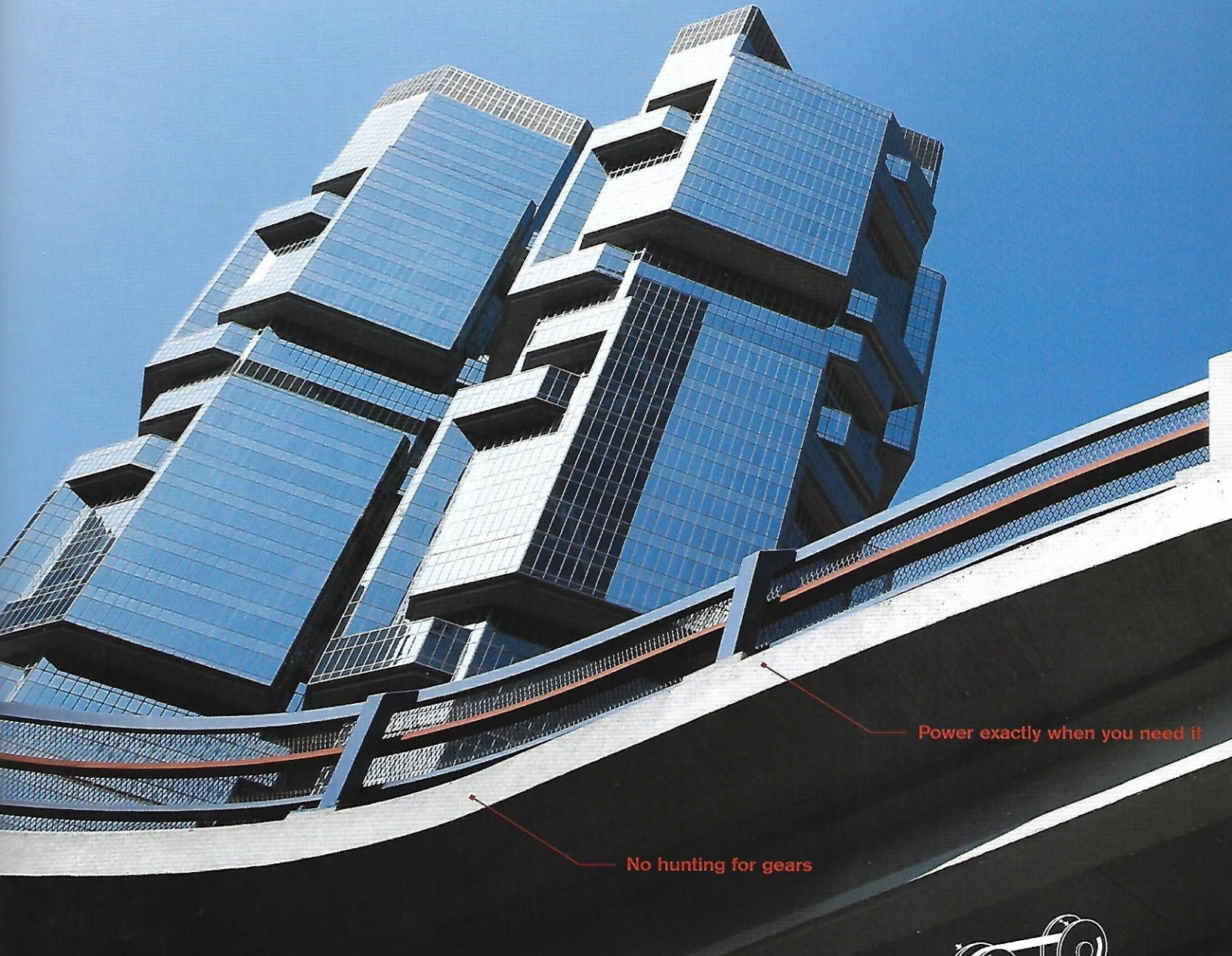
**Ready to play.** Nissan's advanced valve timing gives Versa outstanding power when you demand it, without requiring a large, thirsty engine. Especially when combined with an efficient, easy-breathing, 4-valve-per-cylinder, double-overhead-cam design. For a smoother, quicker-responding engine – just like you'd expect from a Nissan – microfinishing, a technique developed for racing, is used to reduce friction on critical engine components. The result is a 1.8-L 4-cylinder that's always game.



<sup>1</sup>2007 EPA fuel economy estimates of 30 city/36 highway for Versa equipped with Xtronic CVT transmission. (28 city/35 highway with automatic transmission.) Actual mileage may vary with driving conditions – use for comparison only. <sup>2</sup>Under normal driving conditions with routine fluid and filter changes. See your owner's manual for details. <sup>3</sup>Ward's Automotive Group's Lower Small Car segment, January 2006.

**A transmission that doesn't just raise the bar.** It elevates the entire driving experience. We call it Xtronic CVT (Continuously Variable Transmission). Its single, flexible belt creates a virtual "gearless" transmission, with no conventional fixed ratios. Put the lever in Drive and glide away. There's no hunting for gears and no shift shock – even when going uphill. Just you enjoying impressive fuel economy<sup>1</sup> and a seamless flow of power. Smoothness, performance, and fuel efficiency all in one forward-thinking car. Things are looking up.

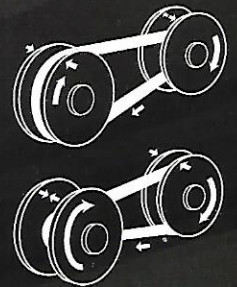




Power exactly when you need it

No hunting for gears

**With its nearly infinite variable ratios**, the available Xtronic CVT custom-tailors the engine's output to suit your demands. When you need passing power, push down on the gas and the transmission will hold the engine at the optimal rpm for a rush of linear acceleration. The speedometer needle will move swiftly, but you'll see the tachometer hold steady, in that perfect "sweet spot" for maximum power. When you're cruising at constant speed, the CVT will hold the rpm nice and low to maximize fuel economy and help reduce noise.



\*2007 EPA fuel economy estimates of 30 city/36 highway. Actual mileage may vary with driving conditions – use for comparison only.

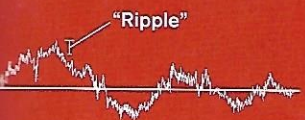
Ride Comfort



**Fear No**

**You're above all that. Nissan believes small cars don't have to ride like small cars. With suspension technologies developed for premium luxury sedans and sports cars, the only bump you get is up to a first-class ride.**

**A ripple that won't make waves.** Conventional shock absorbers are quite simply designed to absorb shocks. The problem is, when they hit a bump they tend to vibrate – sending little “ripples” through the suspension that may be felt by those riding in the car. Nissan “ripple-control” shocks help damp out unwanted motions and vibrations, giving you a smoother, quieter, more-controlled ride.



Normal Shock Absorber



Ripple-control Shock Absorber



**Love on the rebound.** Having a great relationship with the road is handled by thoughtful technology, including a rebound spring located inside the shock absorber. By helping to control how fast and how far the shock extends after hitting a bump or when the vehicle is leaning in a turn, the Versa helps provide a smoother ride and flatter, more secure cornering. Combined with a special valve at the top of the shock absorber that helps smooth out sharp inputs (like when you hit a really big bump), you just might enjoy a newfound passion for driving.



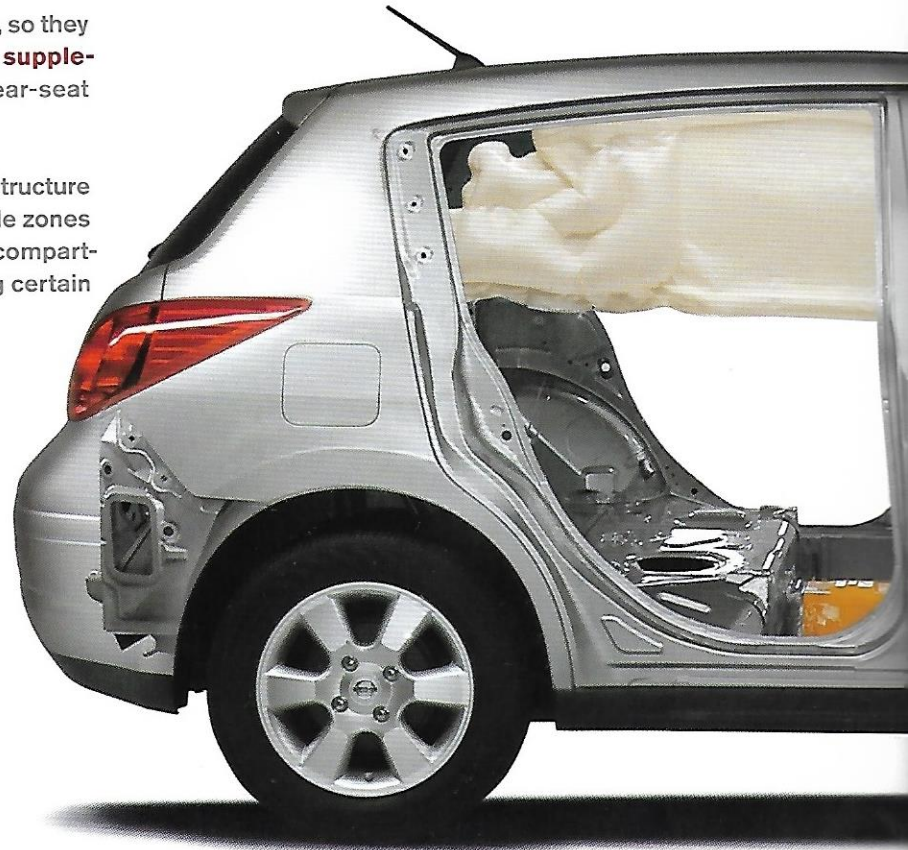
**Its beauty is much more than skin deep.** The Nissan Safety Shield is our comprehensive approach to safety. It includes rigorous crash testing, over 50 standard safety features on every vehicle, available advanced technologies, and child-safety programs like Snug Kids. In Versa, active front-seat head restraints and an Advanced Air Bag System, including front-seat side-impact supplemental air bags and roof-mounted curtain side-impact air bags – **all standard** – are confidence-inspiring examples of our safety philosophy in action.

**Nissan Advanced Air Bag System (AABS)** includes dual-stage supplemental front air bags with seat belt sensors and an occupant-classification sensor. When deployed, the inflation rate of these dual-stage air bags adjusts depending on crash severity and seat belt usage. If the front passenger seat is empty, a sensor will deactivate the air bag.<sup>1</sup>

**Side-impact supplemental air bags** are built into the front seat, so they move with you. **Standard roof-mounted curtain side-impact supplemental air bags** help provide head protection for front and rear-seat outboard occupants.<sup>1</sup>

**Zone Body construction** incorporates a high-intensity cabin structure with crossmembers and reinforcements. Front and rear crumple zones help absorb impact energy before it reaches the passenger compartment. **Energy-absorbing steering column** compresses during certain frontal impacts to help reduce the likelihood of injury.

**Hood buckling creases** allow the hood to buckle at predetermined points, helping prevent it from intruding into the passenger compartment in certain frontal impacts. **Active front-seat head restraints** move up and forward during a rear-end collision, helping reduce the chances of whiplash-type injuries to front-seat passengers.





**Another Nissan First.** NHTSA-certified 'Child Passenger Safety' technicians have dedicated over 1,000 man-hours to checking over 4,000 child seat installations in Nissans. The result: An industry first, The Snug Kids Child Safety Seat Fit Guide. This guide lists child seats that fit the rear seats of Nissan vehicles, as well as offers invaluable tips on correct installation. Look for the latest Fit Guide at [NissanUSA.com/snugkids](http://NissanUSA.com/snugkids)



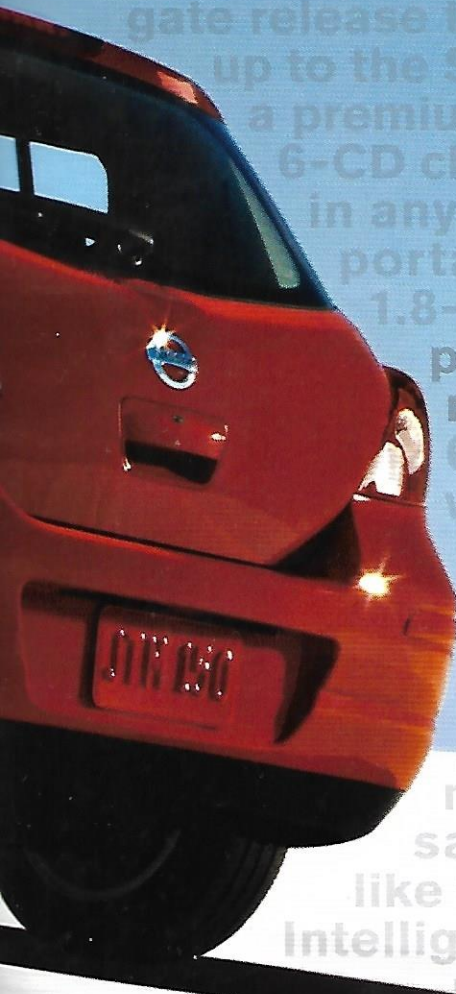
**LATCH System.** Yet another way we're working to help keep children safe. The Versa LATCH System (Lower Anchors and Tethers for CHildren) lets you secure LATCH-compatible child restraints in the rear seat without having to use seat belts or a locking clip.

**Anti-lock Braking System (ABS).** Versa's available advanced ABS system is there to give confident, secure braking when you need it most. **Electronic Brake force Distribution (EBD)** adjusts brake proportioning for added weight in the rear from passengers or cargo – it even adjusts as fuel is used up. Whether it's a daring squirrel or a stalled big rig, **Brake Assist** senses how quickly the brake pedal is depressed and immediately applies maximum available power boost for braking.

<sup>1</sup>Air bags are only a supplemental restraint system; always wear your seat belt. Even with the occupant-classification sensor, rear-facing child restraints should not be placed in the front-passenger's seat. Also, all children 12 and under should ride in the rear seat properly secured in child restraints, booster seats, or seat belts according to their size. Air bags will only inflate in certain accidents; see your owner's manual for more details. Inflated air bags shown for illustration purposes only. Actual air bags deflate after deployment.

**It started with a big idea.** Take the best things about small cars and toss out the rest. Instead, make a small car with the kind of interior room you'd find on a much larger car. A car that rides smoothly and quietly. That not only feels luxurious, but safe, too. And with the kind of performance you'd expect from a Nissan, along with the quality and durability you'd expect from... well, a Nissan. Finally, make it a great value too, with loads of standard features and some available options rarely offered on a small car. The first thing that had to go was small-car thinking. We decided to go big. To create the largest interior in its class, we moved the drivetrain and suspension components as far away from the cabin as possible. Once we created all that space, there was room to splurge, so there are king-size front seats with double-thickness foam inserts. For a ride as big as it feels, Versa employs advanced technologies like ripple-control shock absorbers that were originally designed for luxury models. You'll feel well-protected too, with active front-seat





head restraints, front-seat side-impact air bags, and roof-mounted curtain air bags – all standard. A comprehensive list of features with everything from standard air conditioning to a power rear lift-gate release to let you know your money is well spent. Step up to the SL and you're styling with 15" alloy wheels and a premium audio system with an MP3-capable in-dash 6-CD changer. An auxiliary audio input\* lets you plug in anything from your portable MP3 player to your portable karaoke microphone. Versa features a 1.8-liter 4-cylinder engine that's not only the most powerful in its class (122 hp)<sup>2</sup>, but with up to 36 mpg<sup>3</sup>, remarkably fuel-efficient too. (A standard 6-speed manual lets you zip through the gears, while an available 4-speed automatic eases the daily commute.) To take things to an even higher level, SL models are available with Nissan's revolutionary Xtronic CVT transmission, giving buttery-smooth performance while providing penny-pinching fuel economy. You might end up pinching yourself when you sample Versa's available high-tech features like the Bluetooth Hands-free Phone System and Intelligent Key, so there's no need to touch a key or remote to lock/unlock or start the Versa. There's also another thing that's standard on every Versa – fun. Sure, everybody says that their cars are fun to drive, but how about some proof? That's easy. The Versa is made by Nissan. In its DNA are the Z, the Maxima, the Xterra, and the Murano – each unique, yet critically acclaimed for driving enjoyment. Is there even more? Absolutely. We'd recommend a visit to your Nissan dealer or [NissanUSA.com/Versa](http://NissanUSA.com/Versa) for further details.

Ward's Automotive Group's Lower Small Car segment, January 2006. <sup>2</sup>Driving is serious business and requires your full attention. Do not operate any devices connected to the auxiliary input while driving. <sup>3</sup>2007 EPA fuel economy estimates of 30 city/36 highway for Versa equipped with Xtronic CVT transmission. Actual mileage may vary with driving conditions – use for comparison only. \*The Bluetooth word mark and logos are owned by Bluetooth SIG, Inc., and any use of such marks by Nissan is under license.

# Specifications

Engine	1.8 S	1.8 SL
MR18DE – 1.8-liter DOHC 16-valve 4-cyl. engine	■	■
Horsepower – 122 hp @ 5,200 rpm		
Torque – 127 lb-ft @ 4,800 rpm		
Emissions – ULEV	■	■
Continuously Variable Valve Timing Control System (CVTCS)	■	■
Nissan Direct Ignition System	■	■
Electronic drive-by-wire throttle	■	■
<b>Drivetrain</b>		
Front engine/front-wheel drive	■	■
4-speed automatic transmission (late availability)	□	
6-speed manual transmission	■	■
Xtronic CVT (Continuously Variable Transmission)		□
<b>Wheels/Tires</b>		
15" x 5.5" Steel wheels with wheel covers	■	■
15" x 5.5" 6-spoke aluminum-alloy wheels		■
P185/65HR15 All-season tires	■	■
Tire Pressure Monitoring System (TPMS)	■	■
<b>Brakes</b>		
11.02" vented front disc/rear drum brakes	■	■
4-wheel Anti-lock Braking System (ABS)	■ <sup>AB</sup>	■ <sup>AB</sup>
Electronic Brake force Distribution (EBD)	■ <sup>AB</sup>	■ <sup>AB</sup>
Brake Assist	■ <sup>AB</sup>	■ <sup>AB</sup>
<b>Suspension/Steering</b>		
Front: Independent strut suspension	■	■
Rear: Torsion bar axle with integrated rear stabilizer bar	■	■
Ripple-control shock absorbers	■	■
Front stabilizer bar	■	■
Electric power-assisted steering	■	■
<b>Exterior</b>		
Fog lights		■ <sup>S</sup>
Unique front and rear fascia		■ <sup>S</sup>
Lower body side sill extensions		■ <sup>S</sup>
Rear roof spoiler		■ <sup>S</sup>
LED center high-mounted brake light	■	■
Dual power body-color outside mirrors	■	■
Power sliding glass sunroof with tilt feature		■ <sup>SR</sup>
One-touch rear hatch release	■	■

- Standard
- Optional
- <sup>P</sup> Part of 1.8 S Power Package

- <sup>C</sup> Part of 1.8 SL Convenience Package
- <sup>A</sup> Part of 1.8 SL Audio Package
- <sup>S</sup> Part of 1.8 SL Sport Package (late availability)

Audio	1.8 S	1.8 SL
AM/FM/CD audio system	■	■
Premium AM/FM/in-dash 6-CD audio system		■
Steering wheel-mounted audio controls		■ <sup>C</sup>
Auxiliary audio input jack		■ <sup>C</sup>
MP3/WMA CD playback capability		■
Radio Data System (RDS)		■
Speed-sensitive audio volume		■
Four speakers	■	■
Six speakers		■
Premium speaker upgrade plus Rockford Fosgate-powered subwoofer		■ <sup>A</sup>
Satellite radio pre-wiring <sup>1</sup>		■ <sup>C</sup>
Satellite radio receiver (XM <sup>®</sup> or Sirius <sup>™</sup> ) <sup>2</sup>		■ <sup>SA</sup>
<b>Interior Conveniences</b>		
Intelligent Key keyless ignition and entry system		■ <sup>C</sup>
Bluetooth <sup>®</sup> Hands-free Phone System		■ <sup>C</sup> <sup>3</sup>
Air conditioning (with in-cabin microfilter)		■
Remote keyless entry		■ <sup>P</sup>
Power door locks		■ <sup>P</sup>
Power windows with driver's one-touch auto-up/down feature		■ <sup>P</sup>
Tilt steering column		■
Cruise control with steering wheel-mounted controls		■
Variable intermittent windshield wipers		■
Rear intermittent wiper with washer		■
Rear window defroster		■
Overhead sunglasses storage and front map lights		■
Upper dash storage		■
Front door pockets		■
Rear door pockets		■ <sup>P</sup>
Front and rear cup holders		■
Glove compartment light		■ <sup>P</sup>
Cargo cover		■
Driver visor vanity mirror with strap		■
Passenger visor vanity mirror		■
Dual illuminated visor vanity mirrors		■ <sup>SR</sup>
Digital clock (in radio)		■
Auxiliary 12-volt DC power outlet		■
Battery saver		■
Retained accessory power		■

- <sup>SR</sup> Part of 1.8 SL Sunroof Package
- <sup>AB</sup> Part of ABS Package
- <sup>SA</sup> Part of Satellite Radio Option

## Packages and Options

Seating/Appointments	1.8 S	1.8 SL
4-way manual driver's seat	■	
4-way manual driver's seat		■
4-way manual front-passenger's seat	■	■
Leather/tricot cloth seats	■	
Leather cloth seats		■
Front seat center armrest with storage		■
Rear seat center armrest with cup holders		■
60/40 split fold-down rear seats	■	■
Leather-wrapped steering wheel		■
Door armrest pad	P	■
Upgraded interior touch-points		■
Upgraded interior accents		■
<b>Safety/Security</b>		
Nissan Advanced Air Bag System with dual-stage supplemental front air bags with seat belt and occupant-classification sensor	■	■
Driver and front-passenger side-impact supplemental air bags	■	■
Roof-mounted curtain side-impact supplemental air bags for front and rear-seat outboard occupants head protection	■	■
3-point ALR/ELR passenger seat belt system (ELR for driver)	■	■
Front seat belts with pretensioners and load limiters	■	■
Active front seat head restraints	■	■
ATCH System (Lower Anchors and Tethers for Children)	■	■
One Body construction with front and rear crumple zones	■	■
Energy-absorbing steering column	■	■
Type-style steel side-door guard beams	■	■
Good buckling creases	■	■
Nissan Vehicle Immobilizer System	■	■
Vehicle security system	■	■

### P 1.8 S Power Package

- Remote keyless entry
- Power door locks
- Power windows with driver one-touch auto-up/down
- Door armrest pad
- Rear door pockets
- Glove compartment light

### C 1.8 SL Convenience Package

- Intelligent Key keyless ignition and entry system
- Bluetooth® Hands-free Phone System<sup>2</sup>
- Leather-wrapped steering wheel
- Steering wheel-mounted audio controls
- Satellite radio pre-wiring<sup>1</sup>

### A 1.8 SL Audio Package

- Rockford Fosgate-powered subwoofer
- Premium speaker upgrade
- This package requires 1.8 SL Convenience Package plus 1.8 SL Sport Package or satellite radio option.

### S 1.8 SL Sport Package (late availability)

- Fog lights
- Unique front and rear fascia
- Lower-body side sill extensions
- Rear roof spoiler
- This package requires 1.8 SL Convenience Package.

### SR 1.8 SL Sunroof Package

- Power sliding glass sunroof with tilt feature
- Dual illuminated visor vanity mirrors
- This package requires satellite radio option and 1.8 SL Audio Package.

### AB ABS Package

- Anti-lock Braking System (ABS)
- Electronic Brake force Distribution (EBD)
- Brake Assist (BA)
- This option requires Power Package on 1.8 S.

### SA Satellite Radio Option

- Satellite radio receiver (XM® or Sirius™)
- Satellite radio antenna
- Includes free activation and 3 months of service
- This option requires 1.8 SL Convenience, 1.8 SL Audio, and 1.8 SL Sunroof Packages.

<sup>1</sup>Satellite radio reception is available unless optional satellite receiver and antenna were purchased and installed and an XM® or Sirius™ satellite radio service subscription is active. Satellite radio option can only be installed in vehicles that were factory pre-wired for satellite radio. Satellite radio not available in Hawaii and Alaska. <sup>2</sup>This option requires 1.8 SL Convenience, 1.8 SL Audio, and 1.8 SL Sunroof Packages. <sup>3</sup>Availability of specific features is dependent upon the phone's Bluetooth® support. Please refer to your phone owner's manual for details. Cell phone not included. The Bluetooth word mark and logos are owned by Bluetooth SIG, Inc., and any use of such marks by Nissan is under license.

## Dimensions/Capacities

### Interior Dimensions – Inches

#### Front/rear

Head room without sunroof	40.6/38.3
Leg room	41.4/38.0
Hip room	48.8/47.2
Shoulder room	53.5/50.7

### Capacities

Interior passenger volume (cu. ft.)	94.7
Cargo volume (cu. ft.)	17.8 (rear seats up) 50.4 (rear seats down)
Fuel tank (gals.)	13.2
Engine oil (qts.)	3.2

### Curb Weights – Lbs.

	1.8 S	1.8 SL
Manual transmission	2,722	2,739
Automatic transmission	2,751	N/A
Xtronic CVT	N/A	2,779

### 2007 EPA Fuel Economy Estimates – City/Hwy

	1.8 S	1.8 SL
Manual transmission	30/34	30/34
Automatic transmission	28/35	N/A
Xtronic CVT	N/A	30/36

Actual mileage may vary with driving conditions – use for comparison only.

N/A – Not available.

### Aerodynamics

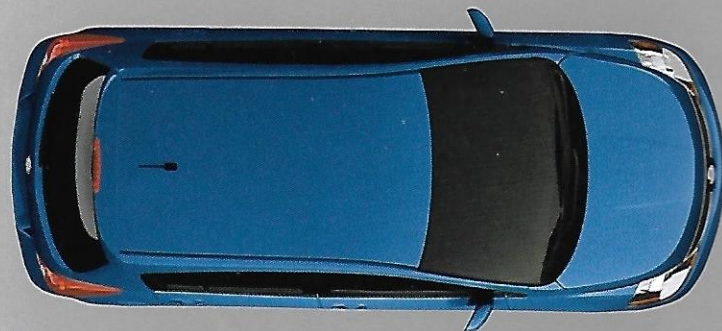
Drag coefficient (Cd):	.31
------------------------	-----

### Exterior Dimensions



Overall width: 66.7"

Track width (front/rear):  
58.3/58.5"



Overall length: 169.1"



Wheelbase: 102.4"

All illustrations, photographs and specifications in this publication are based on the latest product information available at the time of printing. Some vehicles shown with optional equipment. See the actual vehicle for complete accuracy. Availability and delivery times for particular models or equipment may vary. Nissan North America, Inc. reserves the right to make changes at any time, without prior notice, in prices, colors, materials, equipment, specifications, and models and to discontinue models or equipment. Specifications, options and accessories may differ in Hawaii, U.S. territories and other countries. For additional information on availability, options or accessories, see your Nissan dealer.



**1.8 S**

Every 1.8 S includes:

- 122-hp 1.8-liter 4-cylinder engine
- 6-speed manual transmission
- Ultra Low Emissions Vehicle (ULEV)
- 60/40 Split fold-down rear seats
- Air conditioning (with in-cabin microfilter)
- AM/FM/CD audio system
- Roof-mounted curtain side-impact supplemental air bags
- Front seat-mounted side-impact supplemental air bags
- Ripple-control shock absorbers
- Tire Pressure Monitoring System



**1.8 SL**

Includes 1.8 S equipment, plus:

- 15" Aluminum-alloy wheels
- Power windows and door locks with remote keyless entry
- Cruise control
- Premium AM/FM/in-dash 6-CD audio system with MP3 CD playback and auxiliary input jack
- Vehicle security system
- Upgraded interior touch-points and accents

Additional key options:

- Xtronic CVT transmission
- Intelligent Key keyless ignition and entry system
- Bluetooth® Hands-free Phone System

**Versa Sedan:  
Coming early 2007**







**Brilliant Silver K23**

	1.8 S	1.8 SL
Charcoal Cloth	<input type="checkbox"/>	<input type="checkbox"/>



**Sapphire Blue B14**

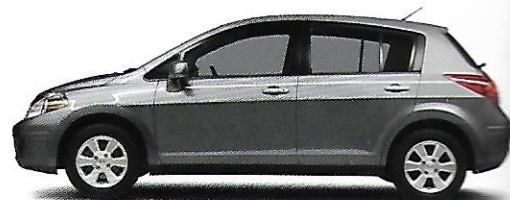
	1.8 S	1.8 SL
Charcoal Cloth	<input type="checkbox"/>	<input type="checkbox"/>

Please see the actual colors at your local Nissan dealer.



**Super Black KH3**

	1.8 S	1.8 SL
Beige Cloth	<input type="checkbox"/>	<input type="checkbox"/>
Charcoal Cloth	<input type="checkbox"/>	<input type="checkbox"/>

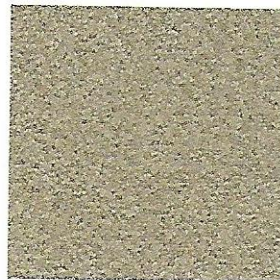


**Magnetic Gray K36**

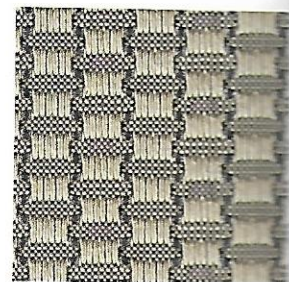
	1.8 S	1.8 SL
Charcoal Cloth	<input type="checkbox"/>	<input type="checkbox"/>

Standard

**Interior Colors**



1.8 S Beige Cloth



1.8 SL Beige Cloth



Red Alert A20

	1.8 S	1.8 SL
Beige Cloth	<input type="checkbox"/>	<input type="checkbox"/>
Charcoal Cloth	<input type="checkbox"/>	<input type="checkbox"/>



Blue Onyx B23

	1.8 S	1.8 SL
Beige Cloth	<input type="checkbox"/>	<input type="checkbox"/>
Charcoal Cloth	<input type="checkbox"/>	<input type="checkbox"/>



White Powder QM1

	1.8 S	1.8 SL
Beige Cloth	<input type="checkbox"/>	<input type="checkbox"/>
Charcoal Cloth	<input type="checkbox"/>	<input type="checkbox"/>

**Discovery.** Even though we've said lots about the new Versa, it's still just the tip of the iceberg. To see even more, go online at [NissanUSA.com](http://NissanUSA.com) – you never know what you might find.



1.8 S Charcoal Cloth



1.8 SL Charcoal Cloth

## Genuine Nissan Accessories

See your Nissan dealer for a Versa accessories brochure, or download one at [NissanUSA.com](http://NissanUSA.com)



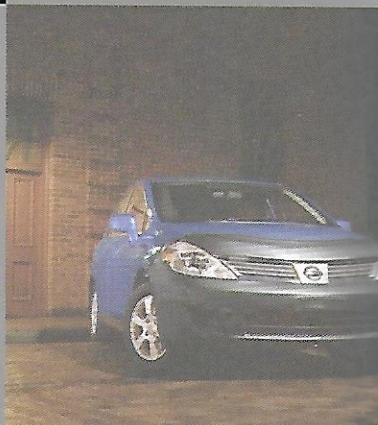
### ▲ Splash Guards

A great way to help protect your Versa's lower body panels. The Splash Guards are contoured to match the wheel openings.

**Why choose Genuine Nissan Accessories?** First, they're backed by Nissan's 3-year/36,000-mile Parts and Accessories limited warranty,<sup>1</sup> when installed at time of vehicle purchase. And you can finance them when you finance your vehicle, adding just a nominal fee to your monthly payment. Only Genuine Nissan Accessories are custom-designed and custom-fit for your Versa. Plus, they're durability-tested, and meet Nissan standards as well as any applicable Federal Motor Vehicle Safety Standards. Look for a wide selection of accessories at over 1,000 Nissan dealers nationwide.

### ◀ Nose Mask

Helps protect against rock chips, bugs, and road debris. A 2-piece design lets you open the hood without removing the mask.



### ▶ Carpeted Floor Mats

These high-density mats come in complementary colors with an embroidered Versa logo, and feature a grommet/hook system to help keep the driver's mat in place.





### Carpeted Cargo Mat

This high-density nylon carpet helps guard against spills and wear. Matched to the interior, it has an embroidered Versa logo and features a non-slip, moisture-resistant backing.



### Also Available

- Emergency Road Kit
- First-aid Kit
- License Plate Frames
- Touchup Paint

## Nissan Gear



Twill Baseball Cap

Watches by Skagen.<sup>™</sup> Pens by Cross.<sup>™</sup> Bags by Ogio.<sup>®</sup> And a whole lot more. Plus a line of merchandise that includes everything from T-shirts to key chains. All of it high-quality, well-designed, and modern in attitude. Like Versa.



### ◀ Satellite Radio<sup>2,3</sup>

Add XM<sup>®</sup> or Sirius<sup>™</sup> satellite radio and enjoy programming in digital sound from coast to coast. Either fully integrated system fits seamlessly into your existing radio.



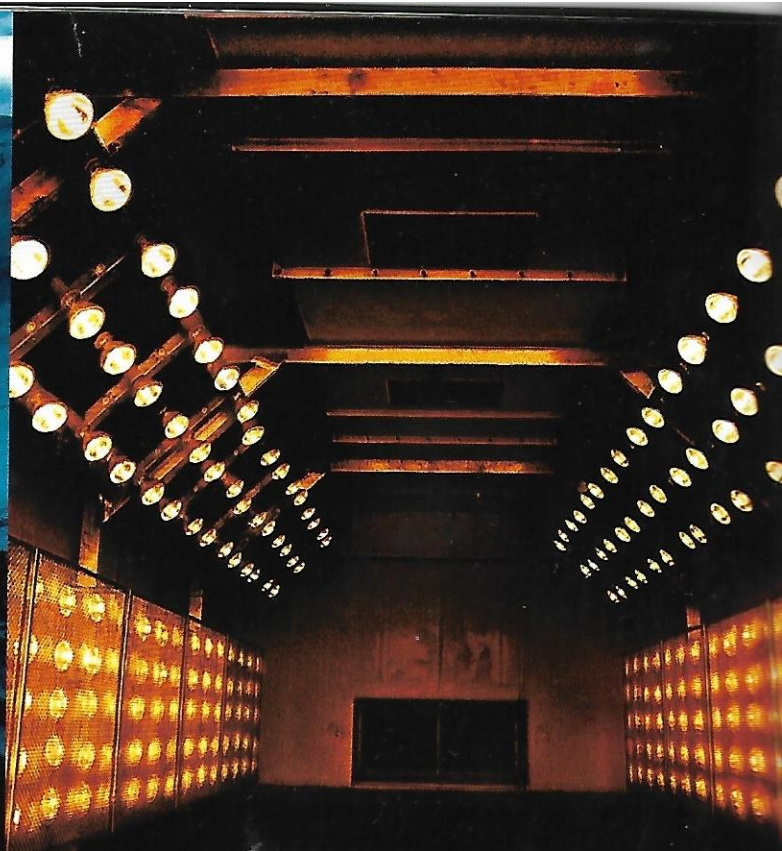
Traveler Mug

To see the complete line of Nissan apparel and lifestyle gear, log on to:

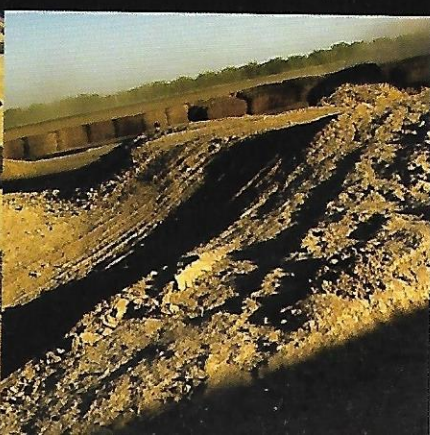
[NissanUSA.com/gear](http://NissanUSA.com/gear)

<sup>1</sup>See your Nissan dealer and read the actual limited warranty for complete details. <sup>2</sup>Includes free activation and 3 months of service. No satellite radio reception is available unless optional satellite receiver and antenna were purchased and installed and an XM<sup>®</sup> or Sirius<sup>™</sup> satellite radio service subscription is active. Satellite radio option can only be installed in vehicles that were factory pre-wired for satellite radio. Satellite radio not available in Hawaii and Alaska. The XM name and related logos are registered trademarks of XM Satellite Radio Inc. SIRIUS and related marks are trademarks of Sirius Satellite Radio Inc. All rights reserved. <sup>3</sup>Only available on 1.8 SL models with Convenience Package.

<sup>™</sup>Cross is a trademark of A. T. Cross Company. <sup>™</sup>Skagen is a trademark of Skagen Designs, Ltd. <sup>®</sup>Ogio is a registered trademark of Ogio International, Inc.



Everything we touch, we shift.  
Everything we shift, we make better.



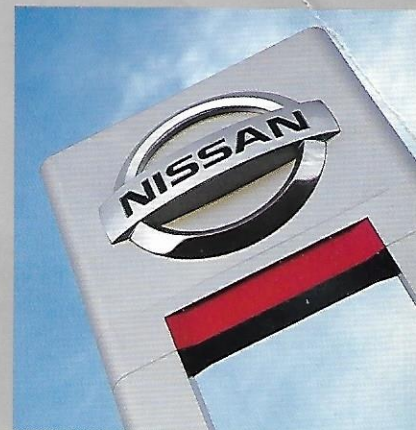
Consider how we test our vehicles, compressing years of wear and tear into a few, intense weeks. There's the heat chamber with 2000 bulbs burning at 375 watts each, and humidity at 95%. And then the other extreme: Cold-weather testing in the subarctic blasts of Fairbanks, Alaska. At our proving grounds in Arizona, we replicate some of the worst roads a vehicle could ever travel, with Detroit-style potholes, New York City manhole covers, Belgian cobblestones, and a truck-scarred LA freeway. We're pretty sure you'll go a little easier on your Nissan; that's just not what we tell our test engineers.

**Warranties** Every Nissan is backed by a 36-month/36,000-mile vehicle warranty coverage and a 5-year/60,000-mile powertrain coverage. (For complete information, see your Nissan dealer and read the actual limited warranty.)

**Signature Financing** When you've decided which Nissan is right for you, Nissan Motor Acceptance Corporation (NMAC) offers a variety of financing options, attractive rates, and flexible terms to make your decision easier and helps make your purchase more accessible. See your Nissan dealer or visit [NissanUSA.com/Financing](http://NissanUSA.com/Financing) for more details. Qualifications and restrictions may apply.

**Security+Plus and Maintenance+Plus** For ultimate peace of mind, consider the Nissan Security+Plus<sup>®</sup> Plan, our extended service contract. It's our commitment to be there for you, and to help you leave your worries behind. Different plans, available for both purchase and lease vehicles, let you tailor the coverage to your driving habits. Maintenance+Plus<sup>®</sup> coverage, on the other hand, ensures your vehicle will receive up to 17 different services and over 33 different inspection items at each visit, using the most up-to-date diagnostic equipment available. (For complete information, see your Nissan dealer and read the actual plan.)

**Genuine Nissan Parts and Service** Every part we make is manufactured to the same exacting standards as the original. And they're the only parts to carry Nissan's factory-backed limited warranty. At Nissan dealers, you'll find factory-trained, certified service technicians who are just as precision-oriented.



[NissanUSA.com](http://NissanUSA.com)

Log on, check out our entire lineup, or configure the exact Versa you want. And if you simply have a question, you can always call 1-800-NISSAN-3.

At [NissanUSA.com](http://NissanUSA.com), you'll find virtual product demonstrations, a way to "build your own Nissan," a dealer locator, and more information about key Nissan support services. Or if you'd prefer, call 1-800-NISSAN-3 for answers to specific questions about Versa or any other Nissan vehicle. The Nissan names, logos, product names, feature names, and slogans are trademarks owned by or licensed to Nissan Motor Co. Ltd. and/or its North American subsidiaries. **Always wear your seat belt, and please don't drink and drive.** © 2006 Nissan North America, Inc. '07 Versa. 07002-05/06-250M-AL.



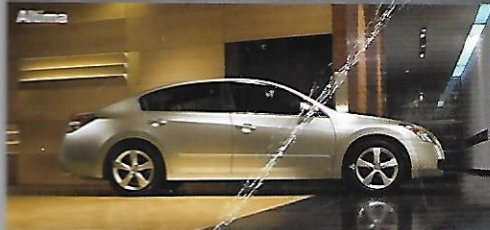
Maxima



Armada



Titan Crew Cab



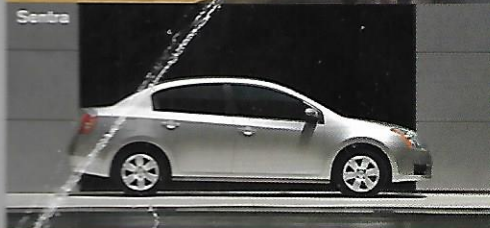
Altima



Pathfinder



Titan King Cab



Sentra



Xterra



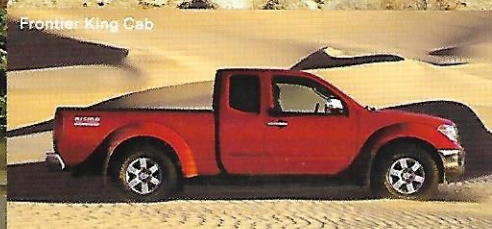
Frontier Crew Cab



Versa Hatchback



Murano



Frontier King Cab



Versa Sedan coming early 2007



Quest



Z<sup>®</sup> Roadster

We see **SHIFT\_** as an invitation. To challenge whatever feels too familiar. To open your mind to the unfamiliar. To ask the questions no one else is asking. And to find answers no one else can. At Nissan, we do this every day. And it shapes everything we do. The result is a lineup of vehicles that represents a pure, uncompromising shift from the ordinary. **NissanUSA.com**



**SHIFT\_**individuality